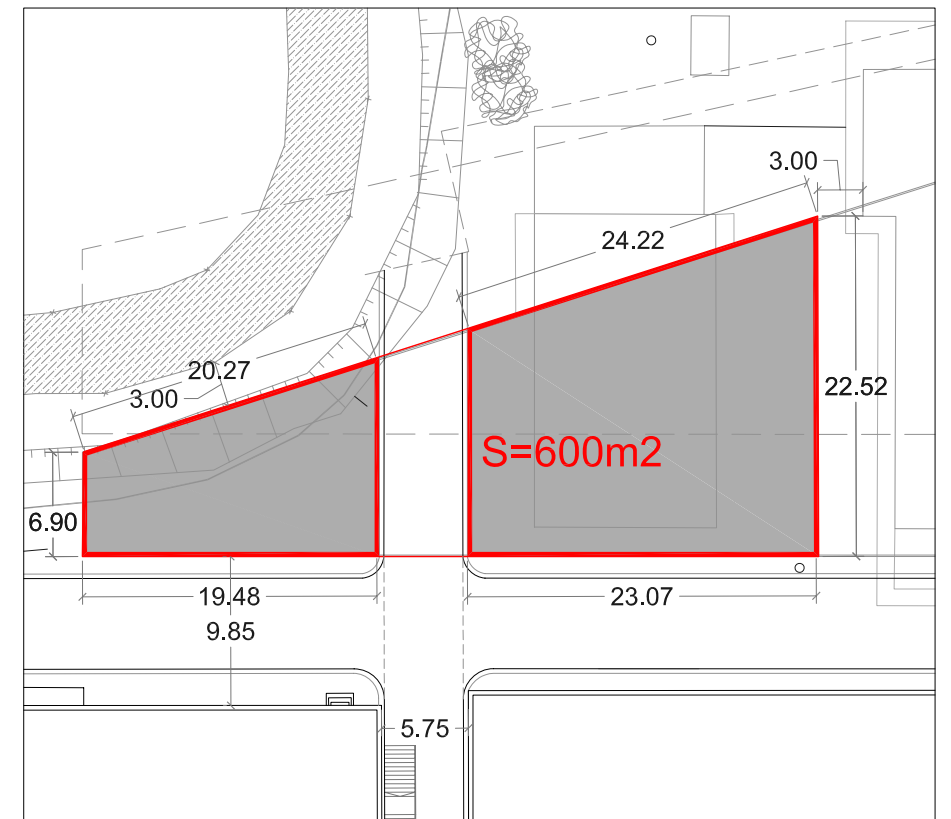


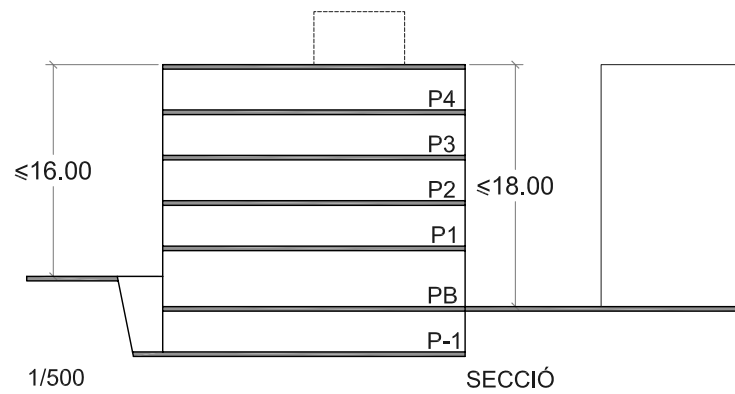
1/500

PLANTA TIPUS (P2,P3,P4)



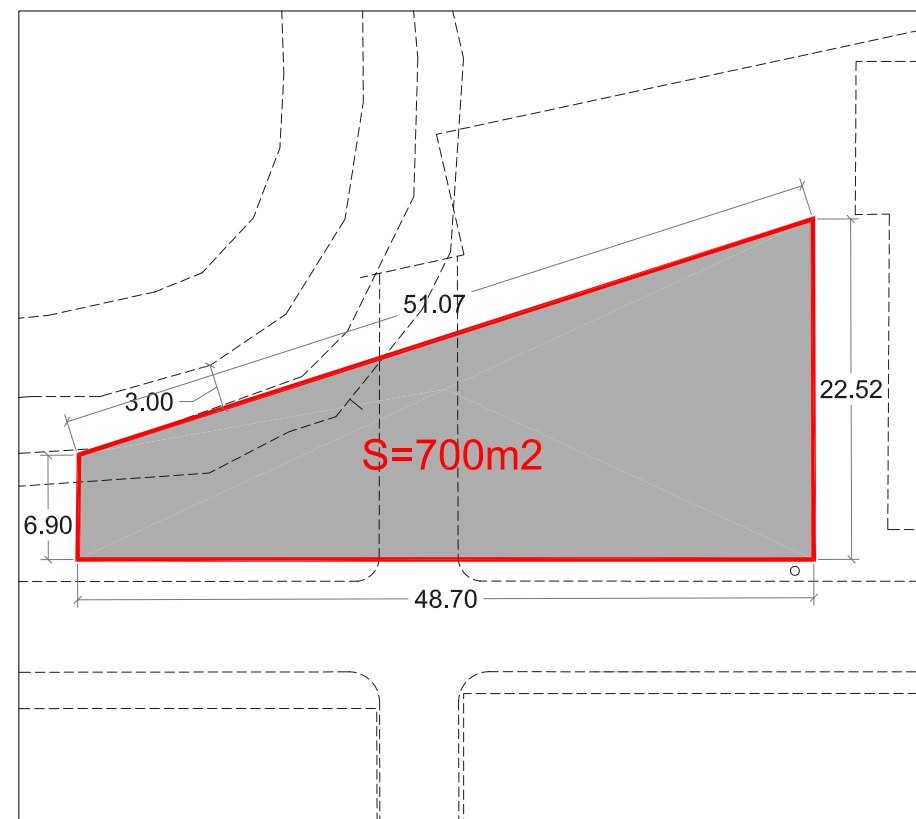
1/500

PLANTA PRIMERA



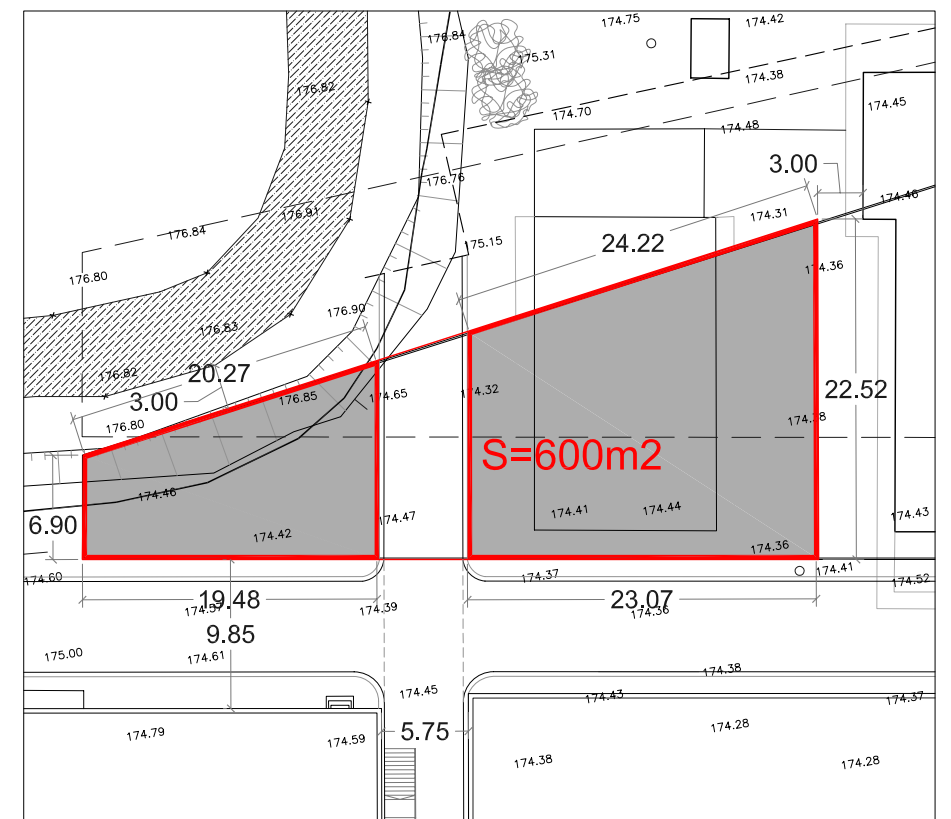
1/500

SECCIÓ



1/500

PLANTA SOTERRANI



1/500

PLANTA BAIXA

$$S = PSot + (PB + P1) + (P2 + P3 + P4)$$

$$S = 700 + (600 \times 2) + (700 \times 3) = 4000m^2$$

Sup. 1a FASE: 4000m²